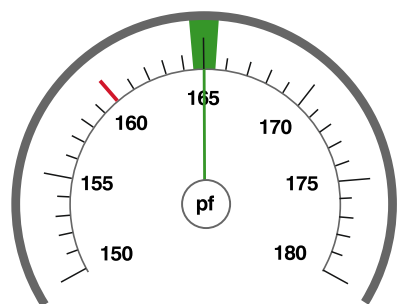


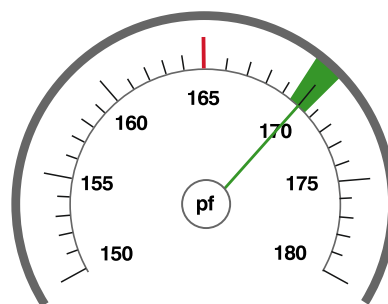
TECHNICAL INFO» ELEY® action .38 super comp

Major power factor



IPSC
Power Factor
165

ELEY power factor



USPSA
Power Factor
170

ELEY power factor

Action .38 super comp major

124g round-nose

Major power factor for IPSC. Superior safety. Absolute accuracy and controllable recoil.

That's what you'll get with ELEY's brand new ELEY Action .38 super comp major power factor round. Designed and developed by the world's most respected sporting ammunition manufacturer, the new competition round promises to be a sure-fire hit amongst practical shooters.

Calling on 190 years of ammunition expertise, ELEY action .38 super comp delivers major power factor for IPSC matches and assembles the best components with a specific propellant to provide a safe and effective competition round for Open Division Competitors.

The round provides reduced recoil for improved sight picture recovery, and its 'rimless' case loaded with a round nose copper metal jacketed 124gr bullet, offers superb reliability, magazine stacking and feeding.



Bullet Profile

Bullet Weight

Round-nose 124gr / 8.04 grams

Bullet type Case type

Copper metal jacket Rimless

Power factor

USPSA 170 / IPSC 165

Reference firearm

The reference firearm has been the STI DVC Open 2011 competition handgun, designed and manufactured for use with Major Power Factor ammunition. ELEY USPSA load has been designed to achieve a power factor of 170 and the ELEY IPSC load to achieve a power factor of 165. Results may vary in individual firearms.

DESIGNED FOR»



Designed for:

- Ultimate accuracy and consistency
- Reliable magazine stacking and feeding

Used for:

- USPSA
- IPSC

Firearm:

- .38 Super comp major race pistol

Features:

- Round-nose
- Copper metal jacket
- 124gr bullet
- Light recoil
- Major power factor